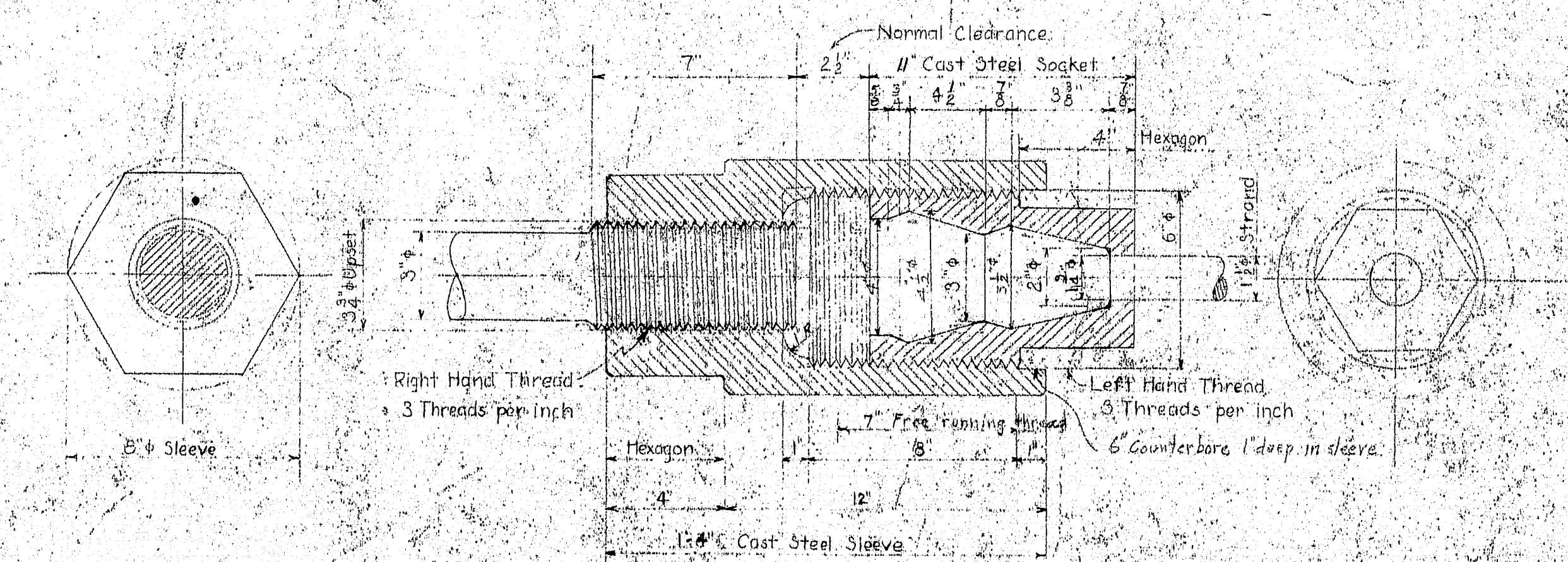


ELEVATION OF ANCHOR CHAIN

Scale: $\frac{1}{2}$ inch = 1 foot

DETAIL OF STRAND SOCKET AND SLEEVE

Scale 3"=150'

REQUIRED

- 76-3 4 steel bars x 2'-0" long (upper one end)
- 76-3 4 steel bars x 1'-0" long
- 152 standard nuts for 3" bar
- 152 8x12 Anchor Plates, B-0776, B-6019, 4 774
- 76 Cast steel timbuckles, std for 3" screw
- 76 Cast steel sleeves
- 76 Cast steel sockets

Note:
3-4 steel bars with plates, nuts and turnbuckles to be furnished by Superstructure contractor and placed by substructure contractor.

Estimated Weight of cast steel sockets, sleeves and turnbuckles --- 16,150*

The Substructure Contractor shall furnish and place structural steel supports to hold anchor chain in position while pouring concrete.

Note: ON THIS STRAND ASSEMBLY, PATENT PENDING BY: MOLTON D. ROBINSON

SUPERSTRUCTURE
SUBSTRUCTURE

P.W.A. PROJECT NO. ME 1010-D

DEER ISLE SEDGWICK BRIDGE DISTRICT
BRIDGE OVER EGSEMOGGIN REACH
FROM LITTLE DEER ISLE TO SEDGWICK
HANCOCK COUNTY, MAINE

ANCHORAGE STEEL

ROBINSON AND STEINMAN
ENGINEERS
NEW YORK CITY

SCALE AS NOTED
DRAWING NO. 3
RS-3310-3

